

JILLIAN HARRIS

EST. 2009



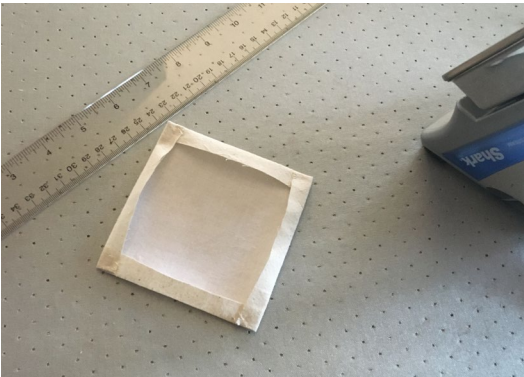
DIY ADVENT CALENDAR

Please Note: Depending on your sewing skills and available time to make this project, choose your fabric wisely. Plaids and stripes for the calendar usually cost more and they will also take more time and precision! I will forewarn you that the pockets do take quite some time. You will need to apply interfacing to the wrong side of the fabric and turn under each side of the pocket to give it a clean look.

Another time saver would be to use felt for the pockets! Felt does not have to be lined or turned under! All you will need to do is cut each square straight and you are good to go.

SUPPLIES

- Calendar fabric – 1.5 metres @ 150cm wide
- Accent fabric for the pockets, letters and heart – 0.8 metres @ 115cm wide
- Lightweight iron-on interfacing for the pockets, letters and heart – buy enough for you to cut (24) 4" squares, letters and the heart
- Medium weight-iron on interfacing for the upper body of the calendar – buy enough for you to cut a 24" Wide X 12"High
- Heat and bond for the letters and numbers. Or purchase pre cut numbers, or circuit cutter ironon vinyl.
- Thread for each colour of fabric
- Grommets (14mm) and same size grommet tool to attach them
- Rotary cutter and mat if available
- Sharp Scissors
- Sewing Pins
- Ruler (clear ruler if possible)
- Scotch tape
- Sewing machine
- Iron
- Hammer



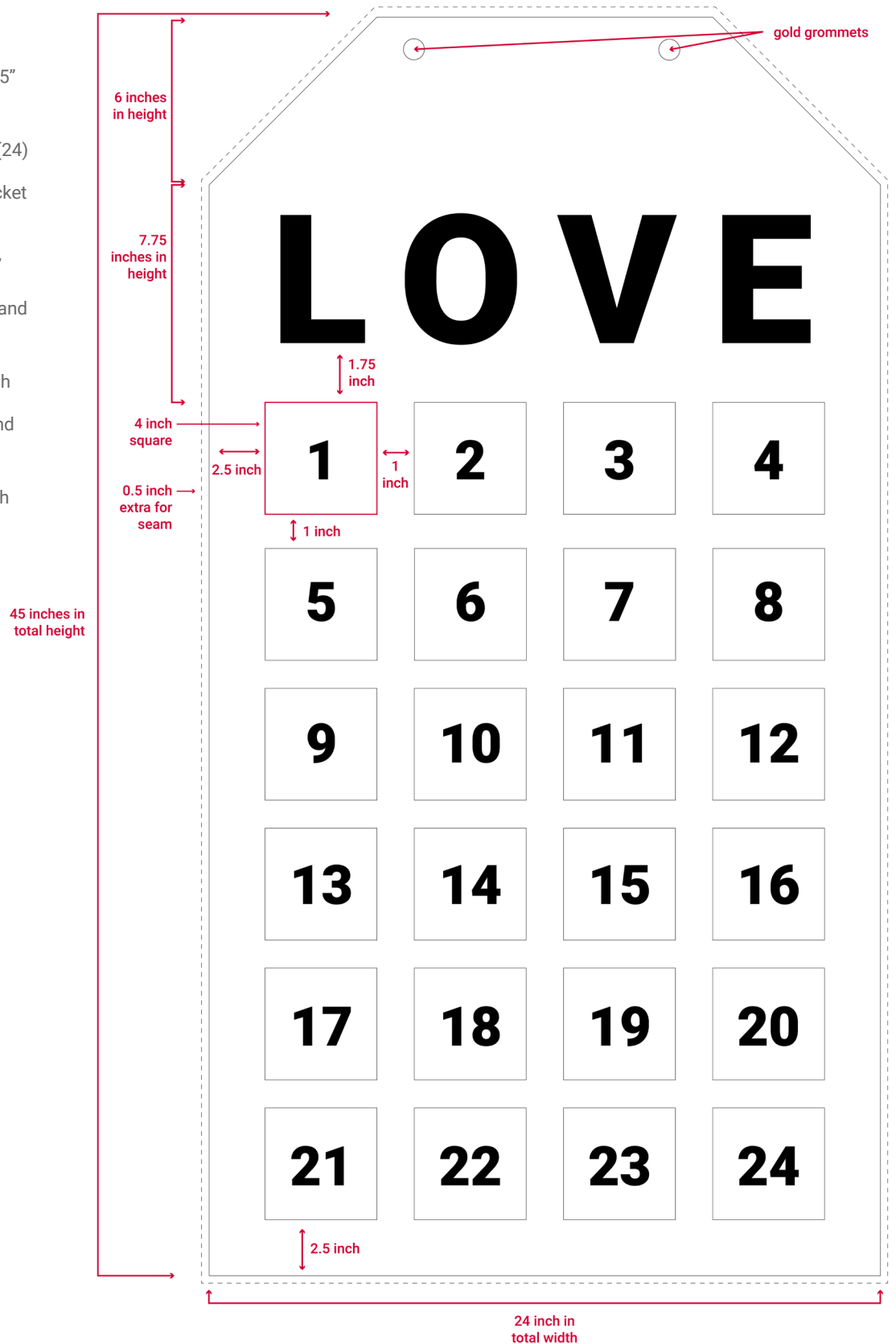
INSTRUCTIONS

- Prewash fabric, dry and iron if necessary.
- Measure and cut out twenty-four 5" squares, the letters, numbers and heart using the accent coloured fabric.
- Measure and cut out twenty-four 4" squares of interfacing.
- Leaving a 1/2" edge on each square (pocket), center and iron-on interfacing to the wrong side of the fabric.
- Turn under each edge of the square 1/2" and iron.
- To ensure a sharp corner, angle cut fabric at the corners of the pocket to minimize the bulk.
- Turn under sides again, tuck in excess corner fabric, re-press and re-measure to make sure the pockets are 4" squares.
- When cutting out the calendar remember to cut according to the diagram but add 1/2" for the seam allowance around the entire pattern.
- Determine your pocket placement on the calendar, sew them to the right side of fabric using a 1/8" top stitch along the bottom and sides of the pocket. Leave the top open.
- Cut the medium weight interfacing the same shape as the upper portion of the calendar less 1/2" on the sides and top for the seam allowance.
- Apply the medium weight interfacing to the wrong side of back piece of the calendar on the top portion only, starting 1/2" from the top and sides.
- With the right sides together, sew the front and the back of the calendar together leaving at least 1/3 of the bottom open.
- Trim the corners, turn the calendar right side out and press.
- Hand stitch the opening closed and press again.
- Top stitch around the outside of the calendar.
- Determine how much fabric you need to apply the Heat n Bond to for the LOVE, heart and numbers.
- Draw or use a stencil for the letters, numbers and heart making sure that they are a mirror image then tape them on the Heat n Bond paper and cut out. **Pro tip. You can also order pre cut iron on numbers, or use a Cricut cutter and iron vinyl.*
- Read and follow the Heat n Bond instructions and apply to the wrong side of the accent fabric.
- Determine the placement of the letters, numbers and heart. Mark them using a pencil on the right side of the calendar carefully. Peel the Heat n Bond paper off one at a time and iron on the letters and heart.
- Read and follow the grommet instructions to complete project.



DETAILS

- Finished calendar is 24" wide X 45" high
- Finished pockets are 4" squares (24)
- Outside edge is 2.5" from the pocket edge
- Rows between the pockets are 1"
- Spacing between top of pockets and bottom of (LOVE) letters is 1.75"
- Letters are 4.25" wide X 4.75" high
- Spacing between top of letters and heart is 1.25"
- The heart is 5.75" wide X 4.5" high





PRINT TEMPLATE: REGULAR

1 2 3 4

5 6 7 8

9 10 11

12 13 14



15 16 17

18 19 20

21 22 23

24



LOVE



PRINT TEMPLATE: MIRRORED

4 3 2 1

8 7 6 5

11 0 1 9

4 1 3 1 2 1

7 1 6 1 2 1

0 2 9 1 8 1

3 2 2 1 2

4 2



OL
EV